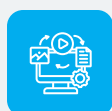


Essential Package Overview

Perfect for communities looking to modernize communication, reduce staff burden, and enhance the resident experience—all with minimal lift.

What's Included



Content Manager

Easily upload, manage, and schedule announcements, menus, photos, videos, and more from one central dashboard.



App Access

Give families and staff a seamless mobile experience for staying informed and engaged—anytime, anywhere.



Community TV Channel

Broadcast daily information, events, and entertainment directly to residents' TVs across the community.



Live Feed CCTV Module

Stream live lobby or front door feeds directly to resident rooms for added security and peace of mind.



Live Video Streaming

Broadcast community events, religious services, or virtual gatherings live to TVs and devices.



Event Calendar

Keep residents in the loop with a visually engaging, always-updated calendar of activities.

Ideal For

Senior Living, Healthcare Campuses, Student Housing, Multi-Family Communities

Benefits

No Hardware Headaches

- Works with your existing Xfinity infrastructure—no new hardware installs for IP-based setups.

Boost Resident Engagement

- Centralize how you share content with residents across TV and mobile.

Save Staff Time

- Automate recurring updates with templates and scheduling tools.

Professional Look & Feel

- Branded channels and polished layouts deliver a modern communication experience.

Community Package Overview

Perfect for communities looking to modernize communication, reduce staff burden, and enhance the resident experience—all with minimal lift.

What's Included

(Everything in Essential, plus)



Family / Resident Community Portal

A private, secure digital space where residents and families can view updates, calendars, menus, and announcements.



Community Directory

Foster social connection by allowing residents and families to explore and connect with neighbors and staff.



Service Request Manager

Streamline and track non-urgent requests like maintenance, IT help, and suggestions.

Ideal For

Senior Living, Healthcare Campuses, Student Housing, Multi-Family Communities

Benefits

Empower Families & Residents

- Provide self-service access to information without additional staff load.

Streamline Internal Processes

- Automate and manage service requests in one place.

Boost Satisfaction & Transparency

- Deliver a responsive, transparent resident and family experience.

Strengthen Community Identity

- Help residents feel connected and engaged with their community.

Community+ Package Overview

Ideal for communities ready to expand functionality, reduce friction, and bring convenience to the next level—for both residents and staff.

What's Included

(Everything in Community, plus)



Event Reservations

Residents and families can RSVP to events through the portal or app—streamlining planning and boosting participation.



Transportation Booking

Digitally manage shuttle and ride requests for residents with ease and accuracy.



Amenity Booking

Enable residents and families to reserve shared spaces like gyms, lounges, or private dining rooms.



Community Message Broadcasting

Instantly send important messages to TVs, mobile devices, and portal users.

Ideal For

Mid to Large Communities, Active Lifestyle Communities, Multi-Property Operators

Benefits

Improve Operational Efficiency

- Reduce manual scheduling and call volume with resident self-service tools.

Empower Resident Choice

- Let residents control how they interact with events and amenities.

Keep Everyone Informed

- Quickly broadcast updates, alerts, and reminders.

Data-Driven Planning

- Use usage data for better staffing and resource planning.

Innovation Package Overview

The most comprehensive offering for communities that want to lead the way in tech-enabled engagement, family transparency, and operational insight.

What's Included

(Everything in Community+, plus)



Activity Tracker

Track participation and generate reports for families and staff, showing engagement over time.



Meal Tracker

Monitor dining participation to inform staffing, menus, and transparency.



Community Kiosk

An easy-to-use touchscreen station for walk-up access to community info like menus and calendars.



Amazon Alexa Integration

Let residents ask for daily schedules, menus, or updates using voice commands.



Integrations with Property Management Tools

Seamlessly connect with your existing systems to streamline data and reduce double entry.



Advanced Analytics Dashboard

Gain insight into trends across engagement, service requests, and more to support smarter operations.

Ideal For

Forward-Thinking Operators, Premium Communities, Enterprise-Scale Portfolios

Benefits

Deliver Unmatched Transparency

- Provide families with weekly activity summaries and real-time updates.

Level-Up Engagement & Accountability

- Make data-informed decisions to improve resident programs.

Reduce Staff Burnout

- Automate admin tasks so your team can focus on care and connection.

Future-Proof Your Community

- Leverage voice tech, deep integrations, and analytics to stay ahead.